

Emission Control System

Evaporative Emission (EVAP) Controls (cont'd)

Troubleshooting Flowchart

Inspection of Evaporative Emission Controls.

Disconnect #6 vacuum hose from the EVAP purge control diaphragm valve (on the EVAP control canister) and connect a vacuum pump/gauge to the hose.

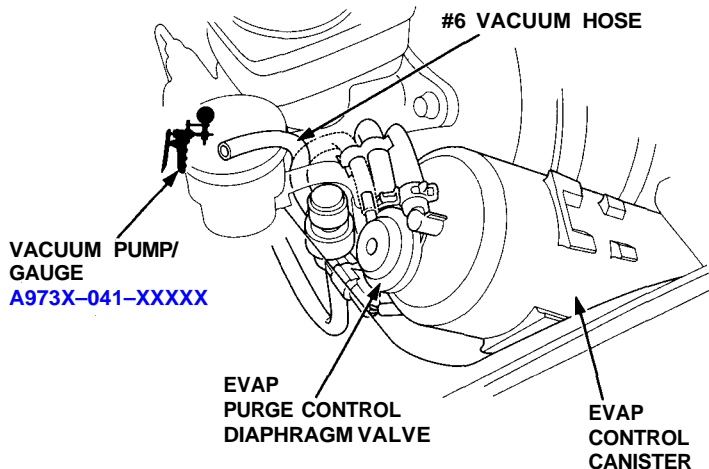
Start the engine and allow it to idle.
NOTE: Engine coolant temperature must be below 158°F (70°C) and air conditioner OFF.

Is there vacuum ?

YES

NO

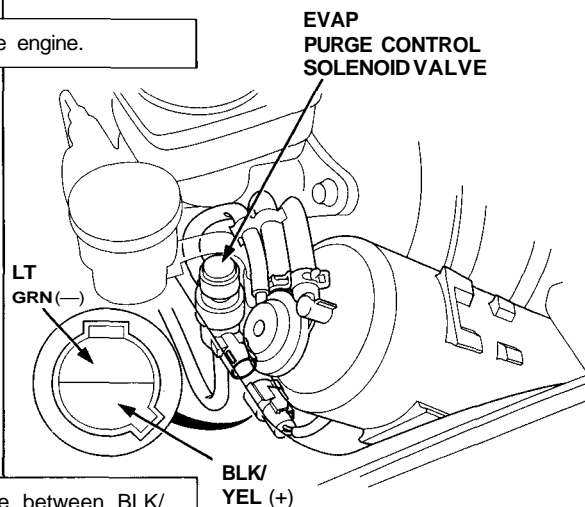
(To page 11-155)



Turn the ignition switch OFF.

Disconnect the 2P connector from the EVAP purge control solenoid valve.

Start the engine.



Measure voltage between BLK/YEL (+) terminal and LT GRN (-) terminal.

Is there battery voltage ?

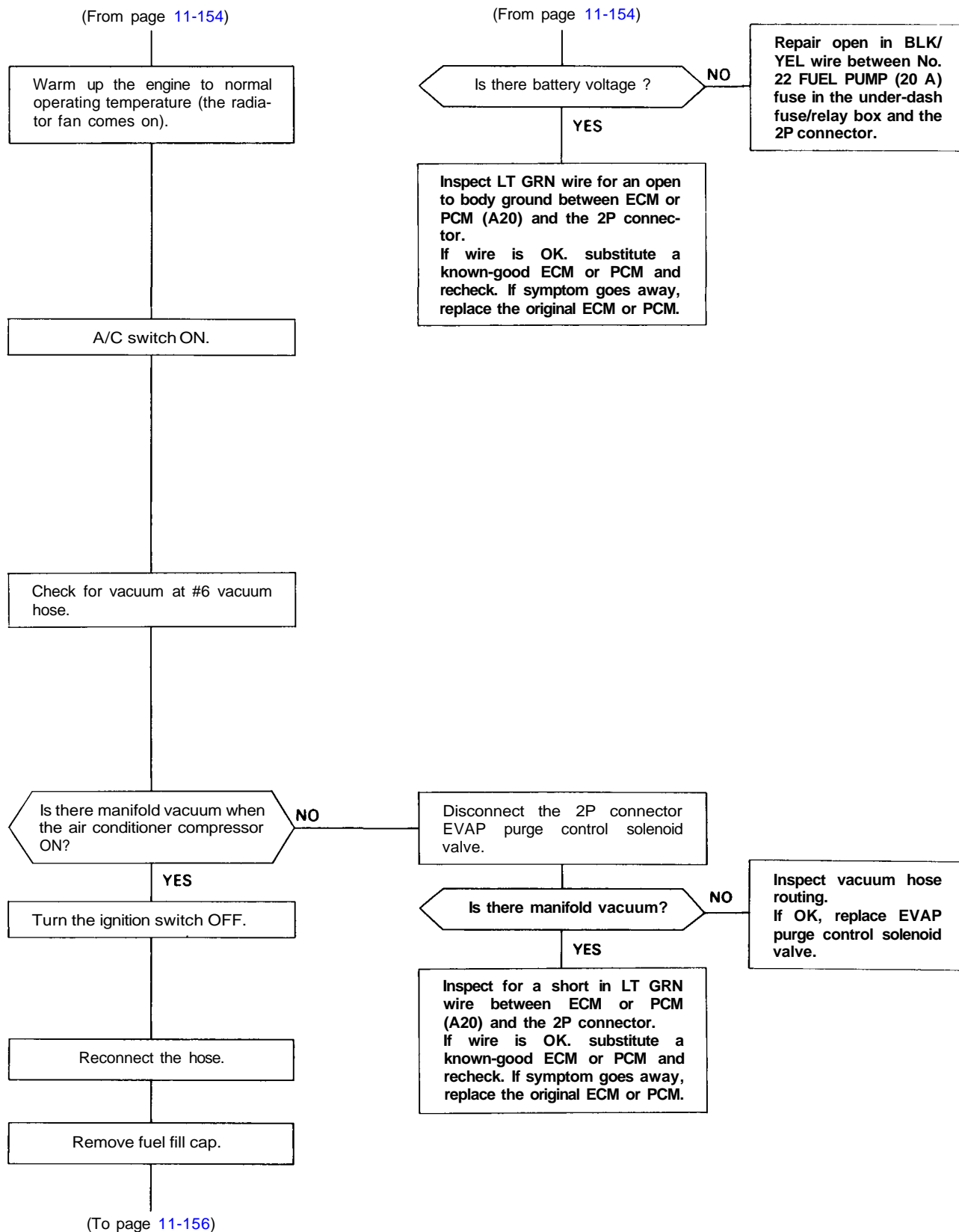
YES

NO

Measure voltage between BLK/YEL (+) terminal and body ground.

(To page 11-155)

Inspect vacuum hose routing.
If OK, replace EVAP purge control solenoid valve.



(cont'd)

Emission Control System

Evaporative Emission (EVAP) Controls (cont'd)

(From page 11-155)

Connect a vacuum/pressure gauge to purge air hose.

Start the engine and raise engine speed to 3,500 rpm.

Does vacuum appear on gauge within 1 minute?

YES

See EVAP two way valve test to complete.
Evaporative emission controls are OK.

NO

Connect a vacuum/pressure gauge to the purge hose and raise the engine speed to 3,500 rpm.

Does vacuum appear on the gauge?

YES

Replace the EVAP control canister.

VACUUM/PRESSURE
GAUGE 0-4 in. Hg
07JAZ-001000B

PURGE
HOSE

PURGE AIR HOSE

